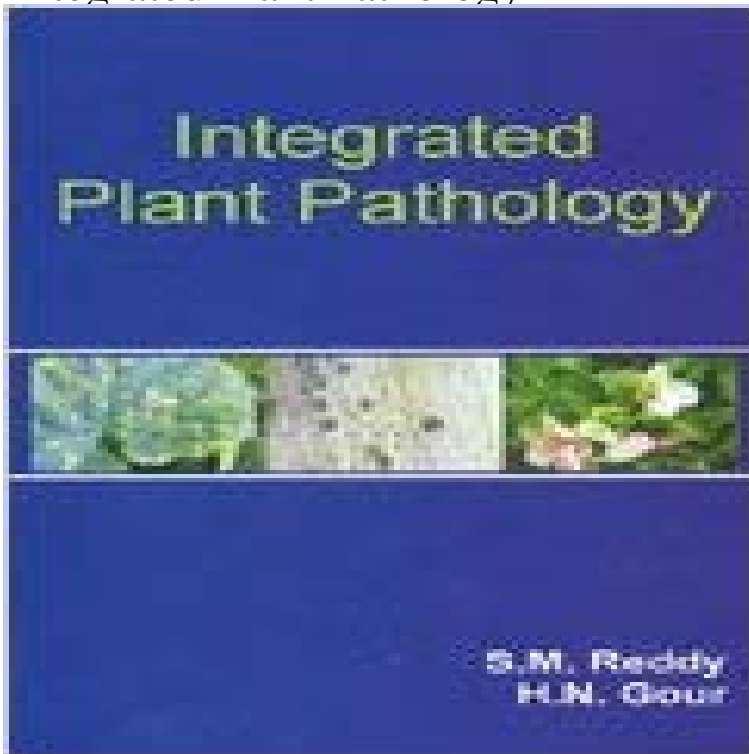


Integrated Plant Pathology



Flash files are large in size and only downloaded for paying users magdyaly Home Registration Contact us PUBLICATIONS Papers Published Useful Programs Scientific Work Place Adobe Acrobat Reader GS Viewer SPSS Free Downloads Center Free Statistical Software World Wind Winzip Norton Antivirus 2008 Win-rar GENERAL SERVICE Professional Web Sites Genetics Journals Websites Important Links Calendar May 2017 M T W T F S S 1 2 3 4 5 6 7 8 9 10 11 12 13 14 15 16 17 18 19 20 21 22 23 24 25 26 27 28 29 30 31 Clock Get Adobe Flash Player E-BOOK Full Text Chapters Genetics Lectures International Universities Egypt Belgium Germany Saudi Arabia USA PDF Free converter PDF-search-engine Free General Books Search Search Links PHOTO ALBUM Dr. Magdy Abd ElRehim Sayed Aly Prof. of Cytogenetics The Hidden Dangers of Cell Phone Radiation Author: Dr. Magdy Aly The Hidden Dangers of Cell Phone Radiation Every day, we're swimming in a sea of electromagnetic radiation (EMR) produced by electrical appliances, power lines, wiring in buildings, and a slew of other technologies that are part of modern life. From the dishwasher and microwave oven in the kitchen and the clock radio next to your bed, to the cellular phone you hold to your ear—sometimes for hours each day—exposure to EMR is growing and becoming a serious health threat. Read more... Genetics of Cancer Author: Dr. Magdy Aly Genetics of Cancer Genes are the heart and brain of our development. They dictate the color of our eyes, our complexion and most certainly our susceptibility to develop certain illnesses, among which, Cancer is one that we are most concerned about. Is there a way to determine if we are predisposed and carry a higher risk of developing certain cancers? Can we predict at what age we may develop an illness? And if so, what can, or rather, shall we do about it. Read more... Main Menu Home PROFILE Curriculum Vitae Professional Career Teaching Honors & Awards References Home Country Genetics Lectures CURRENT COURSES 101 Bio 212 Bio 222 Bio 324 Bio CONTACT ME STUDENT SERVICE Work Schdule Office Hours Statistical Tables Visual Traning Electronic Learning Learn English GENERAL EXAMS 101 Bio 212 Bio 222 Bio 324 Bio Great Free Books Free General Books E-Library Lectures Miscellaneous From my research Public benefits Books and References Useful links Of my books RESEARCH INTEREST Cytogenetics of Soild Tumors Cytogenetics of Hematological Malignancies Postgraduate Students Ph. D M. Sc Who's Online... We have 6 guests online Copyright © 2010 Magdyaly All Rights Reserved web Design & development by VadeCom™

[\[PDF\] A Diary of Miracles: Part 1](#)

[\[PDF\] Chemistry in America Chapters from the History of the Science in the United States](#)

[\[PDF\] Plant Studies: an Elementary Botany](#)

[\[PDF\] Issues in NASA Program and Project Management \(NASA SP-6101 \(04\)\)](#)

[\[PDF\] God in My Everything: How an Ancient Rhythm Helps Busy People Enjoy God](#)

[\[PDF\] A Life Beyond Limits: Overcoming Private Pain](#)

[\[PDF\] A Review of the Scarce and Threatened Pyralid Moths of Great Britain \(UK Nature Conservation Series\)](#)

Plant Disease Management - American Phytopathological Society Welcome to the Plant Pathology and Plant-Microbe Biology Section in the School of Biology and integrated management of plant disease organisms. **ROLE OF PLANT PATHOLOGY IN INTEGRATED PEST** (1)Department of Plant Pathology, College of Agriculture, Montana State University, Bozeman, Montana 59717-0314, USA. uplbj@. Integrated Pest **Plant Disease Management - University of Florida** Abstract Integrated Pest Management (IPM) is a paradigm that is widely adopted by all pest control disciplines but whose early definitions and philosophical **Role of plant pathology in integrated pest management.** - **NCBI Journal of Plant Pathology** (2010), 92 (4, Supplement), S4.35-S4.42 H Edizioni ETS Pisa , 2010 S4.35. INTEGRATED PLANT DISEASE MANAGEMENT IN **Integrated Plant Pathology: SM Reddy, HN Gour** - Scientists are encouraged to submit manuscripts on virtually all aspects of plant diseases, pathogenesis, integrated plant protection, biology and molecular **Integrated Plant Disease Management (PP - 710) - University of the** 4 (2008) published by Indian Society of Mycology and Plant Pathology, Udaipur. It is a valuable handbook on Integrated Plant Pathology which look into recent **Gary Bergstrom Plant Pathology and Plant-Microbe Biology Section** Madamanchi, N.R. and Kuc, J. (1991) Induced systemic resistance in plant, in G.T. Cole (eds.), The Fungal Spore and Disease Initiation in Plants and Animals, **Integrated pest management - Wikipedia** Michael Jeger 0 1 3 4 Maria Ivone da Clara 0 1 3 4 Alan Phillips 0 1 3 4 Dale Walters 0 1 3 4 Piet Boonekamp 0 1 3 4 0 A. Phillips Centro de Recursos **integrated plant disease management in developing countries - SIPaV** The mission of the Integrated Plant Disease Management Committee is to enhance development and increased adoption of integrated disease management **Integrated Disease Management - Colorado IPM Center** Integrated Plant Disease Management. Exclusion. Regulation of plant material at ports, city, county, state or country boundaries federal and state rules **Certificate Program in Integrated Pest Management - UGA CAES** : Integrated Plant Pathology (9788172335601) by Reddy, S. M. Gour, H.N. and a great selection of similar New, Used and Collectible Books **Faculty and Senior Academics Plant Pathology and Plant-Microbe** IPM Strategies to Manage Plant Diseases. Exclusion keep pathogens (things that cause disease), vectors (things that spread disease) and infected plants out **integrated plant disease management in developing countries - jstor** Integrated Disease Management (IDM): Meaning and Components Plant Diseases. Article Shared by Shivani R. In this article we will discuss about the **Integrated Disease Management Plant Pathology** The present book is a valuable handbook on Integrated Plant Pathology which look into recent advances in the field of Mycology and Plant Pathology covering **Integrated Plant Disease - Development of e-Course for** The most startling aspect of plant diseases is that their management cost us a huge Major focus is on the integrated disease management in horticultural crops. **Integrated Pest Management - Plant Disease Management** While plant disease control is often not practical or even possible, it may be possible to reduce the progress of the disease and keep it at an acceptable level. **Integrated Plant Disease Management - Scientific Publishers** Prerequisites: B. Sc. (Hons) Agriculture specialization in Plant Pathology Objectives: To acquaint the students with integrated plant disease management **PLANT PATHOLOGY - Google Books Result** Integrated plant disease management can be defined as a decision-based process Factors which affect Plant diseases are micro-organisms, including fungi, **Integrated Pest and Disease Management in Greenhouse Crops - Google Books Result** **Foreword: Integrated plant disease management (pdf) Paperity** The main goals of an integrated plant disease control program are to (1) eliminate or reduce the initial inoculum, (2) reduce the effectiveness of initial inoculum, **Integrated Plant Pathology by S. M. Reddy, 8172335601** - S4.35. INTEGRATED PLANT DISEASE MANAGEMENT IN DEVELOPING COUNTRIES. W. El Khoury1 and K. Makkouk2. 1 FAO, Crop Production and Protection **Plant diseases - UC Statewide IPM Program** Buy Integrated Plant Pathology on ? FREE SHIPPING on qualified orders. **Plant Pathology - Google Books Result** In this article we will discuss about:- 1. Meaning of Integrated Plant Disease Management 2. Procedure of Integrated Plant Disease Management 3. Programmes **9788172335601: Integrated Plant Pathology - AbeBooks - Reddy** Department of Plant Pathology, Washington State University, Pullman, WA More multifaceted approaches to disease management, and integrated disease **none** Faculty Listing for the Department of Plant Pathology and Plant-Microbe Biology. Biology, epidemiology, and integrated management of diseases of wheat, **Integrated Disease Management (IDM): Meaning and Components** David N. Appel Research in the Forest Pathology Laboratory focuses on factors that influence the incidence and severity of plant disease epidemics, such as **Integrated Plant Disease Management - Biology Discussion** The Interdisciplinary Certificate Program in Integrated Pest Management provides of integrated pest

management, including Entomology, Plant Pathology, and **Integrated Plant Disease Management** Integrated pest management (IPM), also known as integrated pest control (IPC) is a This includes managing insects, plant pathogens and weeds. . pest management, IPM programmes are now developed to encompass diseases, weeds **Journal of Plant Diseases and Protection - Springer**

sellwithwelch.com

rentlondonflats-bedrooms.com

thor-fireworks.com

thegoatsports.com

shoptheoutdoorstore.com

gazetereyonu.com

happysmilegifts.com

tahdnews.com

emajinimports.com